



University of Mary

Cara A. Garcia

NUR: 679

Nursing Informatics Seminar 1

Jessica Alexander

12/12/2023



UNIVERSITY
of MARY

for Life.

DATA ANALYSIS CAPSTONE PROJECT



ACKNOWLEDGEMENTS



Executive Sponsor
Instructor
Student Colleagues
Husband

PROBLEM IDENTIFICATION



- Background
- Problem Statement
- Problem Significance
- PICO question
- Purpose Statement

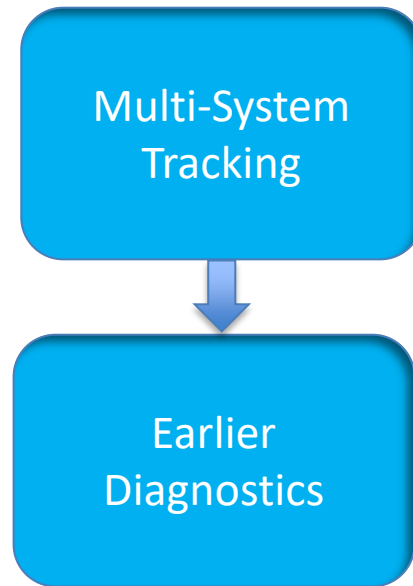
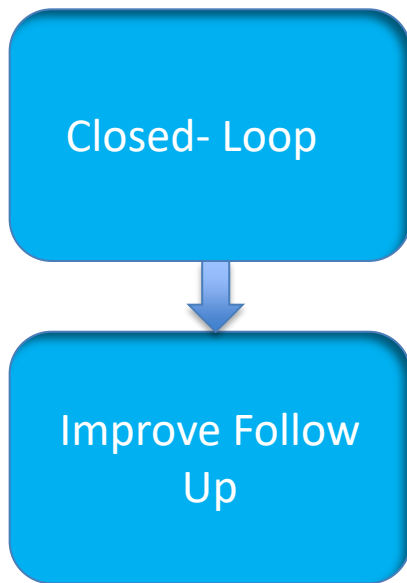


PICO



- P: AIF Patients
- I: Nuance
- C: Traditional Outreach
- O: Rate of follow up

PURPOSE STATEMENT



REVIEW OF LITERATURE

- Zaki-Metias et al. (2023) closed-loop, systematic tracker that improved outreach.
- Mannix et al. (2021) success of a systematic, closed-loop system as well.
- Hammer et al. (2019) made a case for developing a similar tool, as did Bagga et al. (2022) and Moore et al., (2023).

REVIEW OF LITERATURE

- If further studies or follow up, they are considered AIF (Moore et al., 2023; Zaki-Metias et al., 2023).
- Captured in emergency (Hammer et al., 2019; Moore et al., 2023).



REVIEW OF LITERATURE

- Many reasons for LTFU (Bagga et al., 2022; Mannix et al., 2020). Follow up rates for AIF patients are poor (Hammer et al., 2019; Mannix et al., 2020; Moore et al., 2023)
- Consistency in outreach tracking and verbiage (Bagga et al., 2022; Hammer et al., 2019; Moore et al., 2023).

PROJECT RECOMMENDATIONS

- Informaticist to pilot
- Pilot analysis
- Noting hurdles
- Patient-centered care
- Smoother WF



UNIVERSITY
of MARY

for Life.

PROJECT IMPLEMENTATION PLAN



- Key Stakeholders
- Barriers
- Impact
- Planning Process
- Implementation Plan



UNIVERSITY
of MARY

| *for Life.*

KEY STAKEHOLDERS



KEY STAKEHOLDERS



NUANCE:
PMs
ACCOUNT MGRs
CONSULTANTS
ENGINEERS
ARCHITECTS

UNIVERSITY of MARY *for Life.*

HCO:
PROVIDERS
PMs
ANALYSTS
ENGINEERS
ARCHITECTS

KEY STAKEHOLDERS



NUANCE:

PMs

ACCOUNT MGRs

CONSULTANTS

ENGINEERS

ARCHITECTS



UNIVERSITY
of MARY

for Life.

BARRIERS AND FACILITATORS



- Fiscal resources scarce
- FTE sharing
- No dedicated staff x year
- All is well until the ask

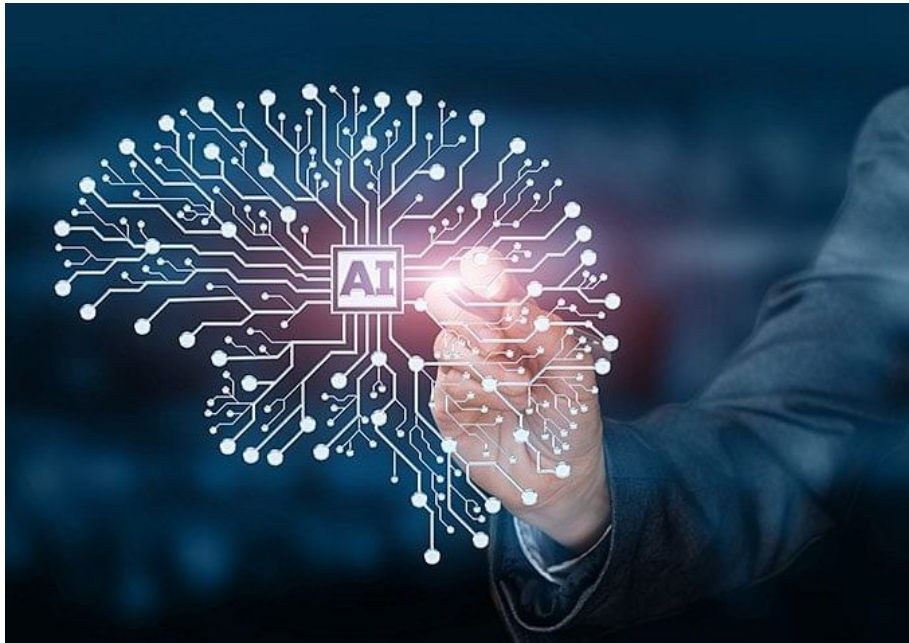


ORGANIZATIONAL IMPACT



- Excited providers
- Attract new patients
- Attract new providers
- > imaging revenue
- < imaging access

Health for a Better World



Poor and vulnerable

AIF creates vulnerability

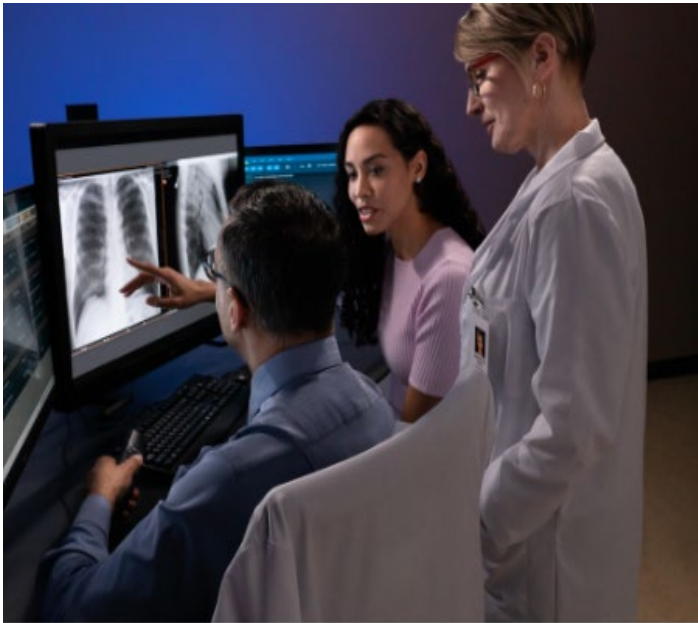
Relatable and congruent

IMPLEMENTATION PLAN



- Remote Settings
- So-Cal
- Waves 2-4
- Estimates millions

PROJECT IMPLEMENTATION PLAN



- FUM Pilot
- FUM Analysis
- De-identification
- Patient-Centered Care
- Ready Program



UNIVERSITY
of MARY

| *for Life.*

FUM ANALYSIS



- Demographics
- AIF data
- Reco data
- Patient responses
- Outreach success
- Outreach failure

DE-IDENTIFICATION

Data De-Identification



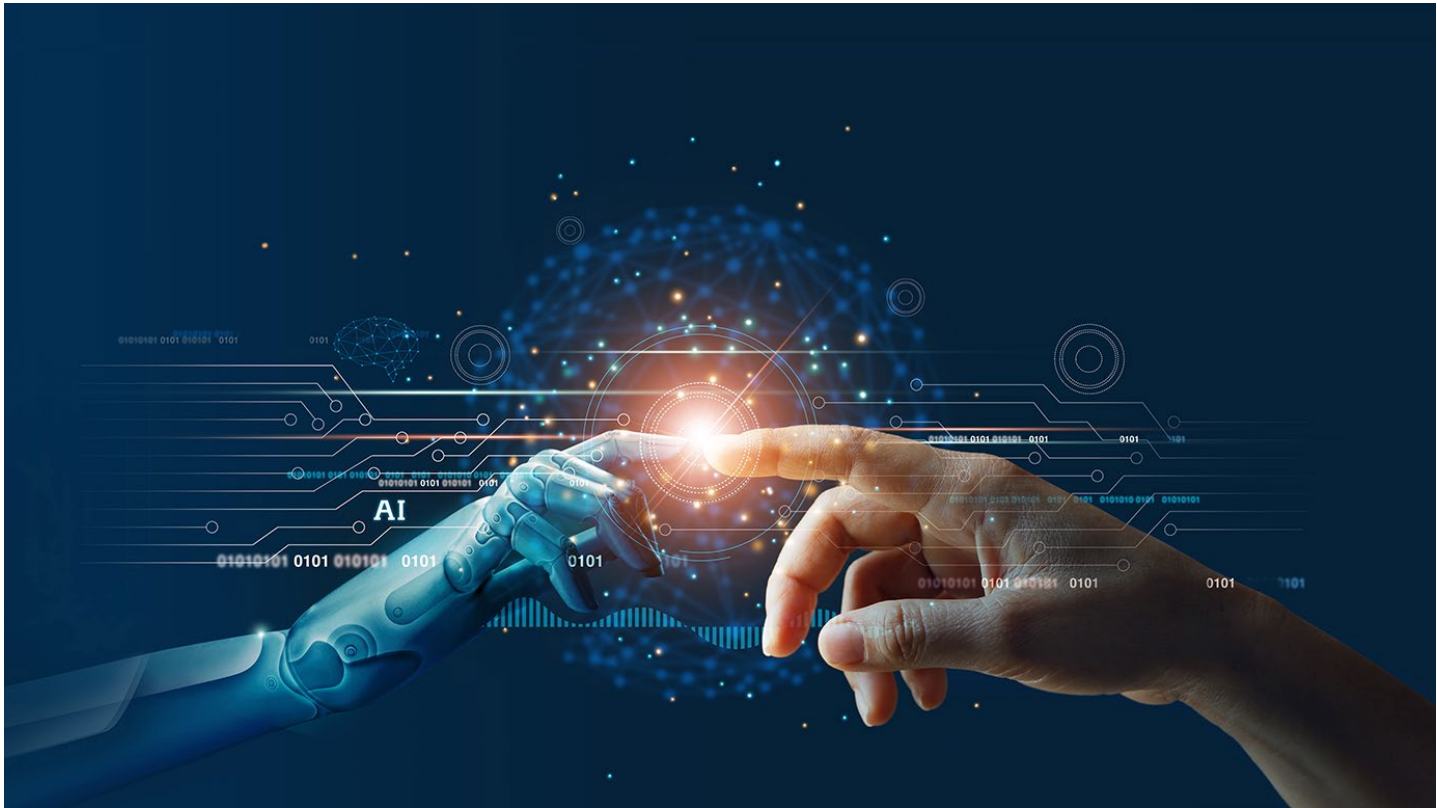
IDENTIFY HURDLES OR PAIN POINTS



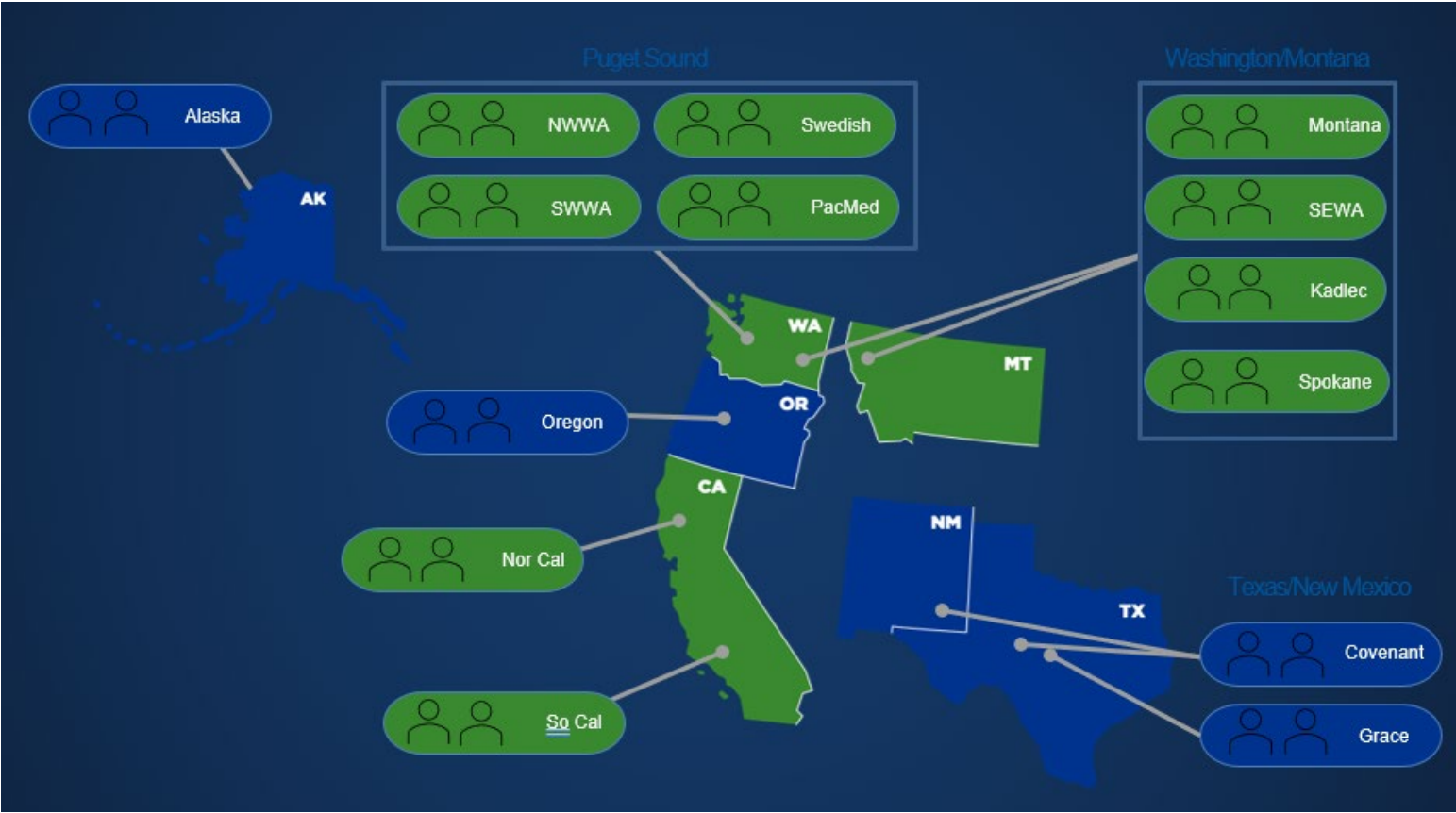
UNIVERSITY
of MARY

for Life.

PATIENT CENTERED CARE



READY THE PROGRAM



UNIVERSITY
of MARY

for Life.

PROJECT OUTCOME MEASUREMENTS



- Outreach
- Compliance
- RCA FAILURES

MEASUREMENT PLAN



- Post review
- Closed- loop
- Analysis

HUMAN SUBJECT PROTECTION



Initial IRB Submission

- Protocol Development
- IRB Approval Process

IRB Institutional Review Board

CONCLUSION



- Problem
- PICO
- Synthesis of literature
- EB recommendations
- Project Plan ID
- IRB



UNIVERSITY
of MARY

| *for Life.*

QUESTIONS?



UNIVERSITY
of MARY

| *for Life.*

REFERENCES

References

- Bagga, B., Fansiwala, K., Thomas, S., Chung, R., Moore, W. H., Babb, J. S., Horwitz, L. I., Blecker, S., & Kang, S. K. (2022). Outcomes of incidental lung nodules with structured recommendations and electronic tracking. *Journal of the American College of Radiology: JACR*, 19(3), 407–414. <https://www.sciencedirect.com/science/article/abs/pii/S1546144021009194>
- Hammer, M. M., Kapoor, N., Desai, S. P., Sivashanker, K. S., Lacson, R., Demers, J. P., & Khorasani, R. (2019). Adoption of a closed-loop communication tool to establish and execute a collaborative follow-up plan for incidental pulmonary nodules. *AJR, American Journal of Roentgenology*, 212(5), 1077–108. <https://www.ncbi.nlm.nih.gov/pmc/articles/PMC7528936/>
- Mannix, J., LaVoye, J., Wasserman, M., Lada, N. E., Onoue, K., Hassan, K., Sarangi, R., Haroon, S., Gaffar, A., Qureshi, M. M., & Gupta, A. (2021). Notification system for overdue radiology recommendations improves rates of follow-up and diagnosis. *AJR, American Journal of Roentgenology*, 217(2), 515–520. <https://www.ajronline.org/doi/10.2214/AJR.20.23173>
- Moore, C. L., Baskin, A., Chang, A. M., Cheung, D., Davis, M. A., Fertel, B. S., Hans, K., Kang, S. K., Larson, D. M., Lee, R. K., McCabe-Kline, K. B., Mills, A. M., Nicola, G. N., & Nicola, L. P. (2023). White paper: Best practices in the communication and management of actionable incidental findings in emergency department imaging. *Journal of the American College of Radiology*, 20(4), 422–430. <https://www.jacr.org/action/showPdf?pii=S1546-1440%2823%2900123-0>
- Zaki-Metias, K. M., MacLean, J. J., Satei, A. M., Medvedev, S., Wang, H., Zarour, C. C., & Arrasi, P. J. (2023). The FIND program: Improving follow-up of incidental imaging findings. *Journal of Digital Imaging*, 36(3), 804–811. https://www.ncbi.nlm.nih.gov/pmc/articles/PMC10287591/pdf/10278_2023_Article_780.pdf